

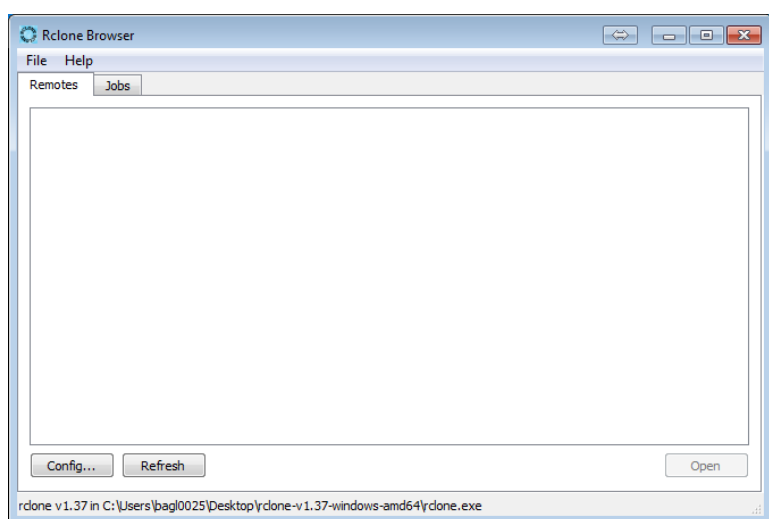
Due to the high cost of data storage we are utilizing the unlimited storage (for UMN accounts) available on Google drive. Rclone appears to be the most efficient way to transfer data to and from Google drive. We suggest you download and configure Rclone to download your data. You can also right click on the Google drive folder and choose download. If you use that method Google will zip all of the data into 2 GB files and download them separately, you will have to merge them all together. We will not provide support for that method.

You will receive an email with a link to the Google drive share. **You need to right click the folder and select 'add to my drive'.**

Rclone Setup

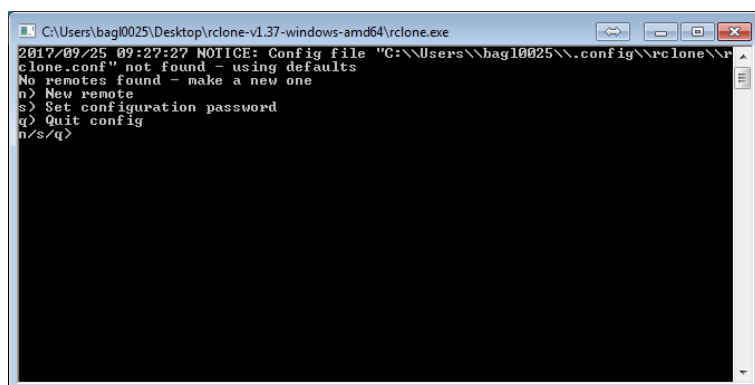
These instructions are for a 64bit Windows computer

1. Install the Rclone appropriate for you system: <https://rclone.org/downloads/>
2. Extract Rclone
3. Download and extract the Rclone browser
<https://github.com/mmozeiko/RcloneBrowser/releases>
4. Run the Rclone browser, it will ask for the Rclone location. Point it to the



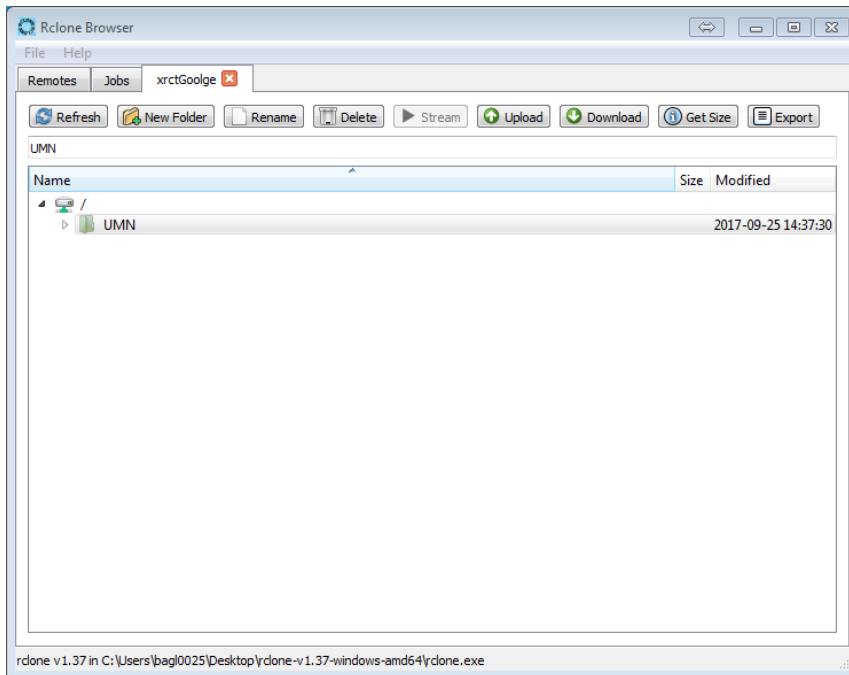
rclone.exe you downloaded in step 1. You should see the window below.

5. Click the configure button to setup your endpoint. It will bring up the window below.

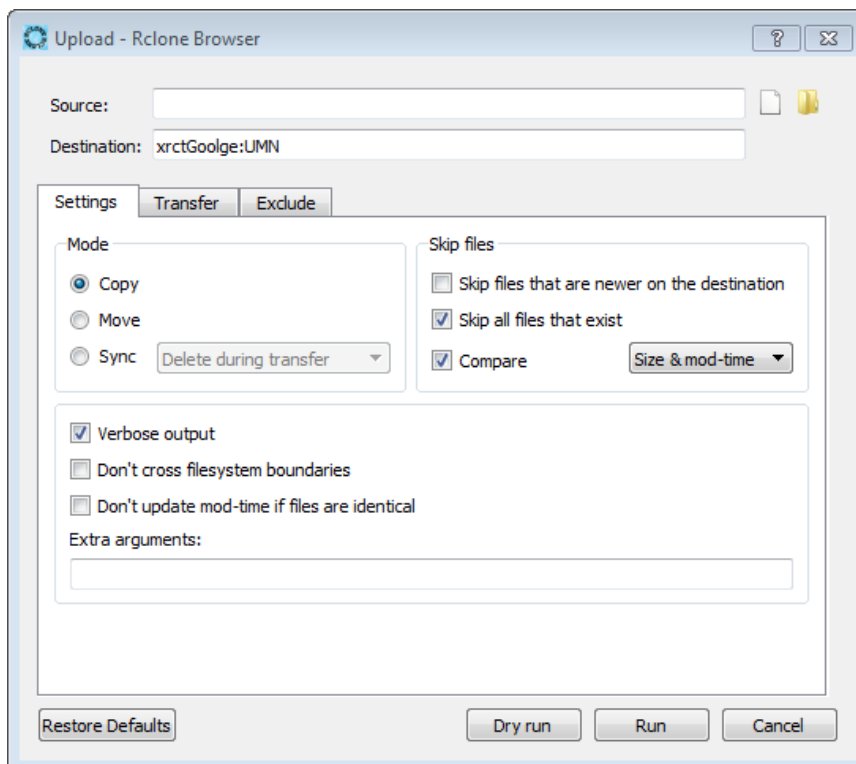


6. The answers are mostly default. The type of storage you want is Google drive, option 8. This link has details <https://rclone.org/drive/>
Basically you want to enter n, give it a name (maybe xrct), 8, leave the next 2 default, y for autoconfig, login to Google drive, n, y, q to quit.

7. Download your data by selecting the download button.



8. You can select verbose mode if you want to see details during the file transfer.



9. You can increase the number of transfers if you want. More than 10 is probably not useful.

